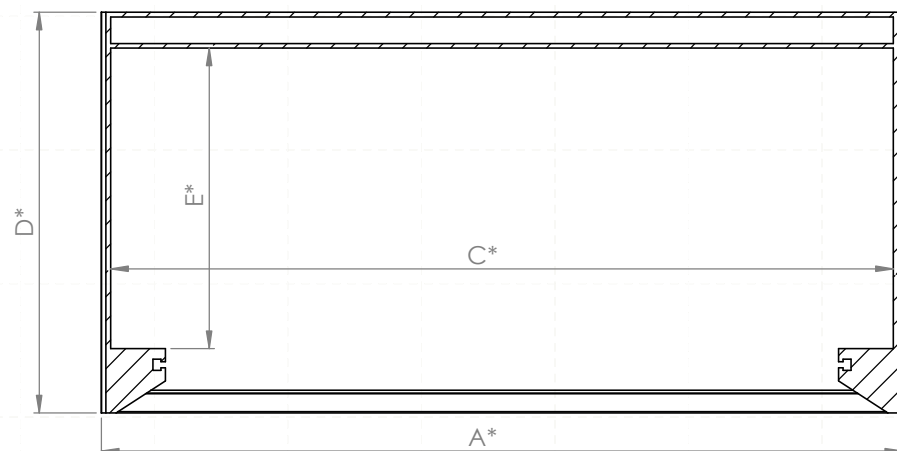
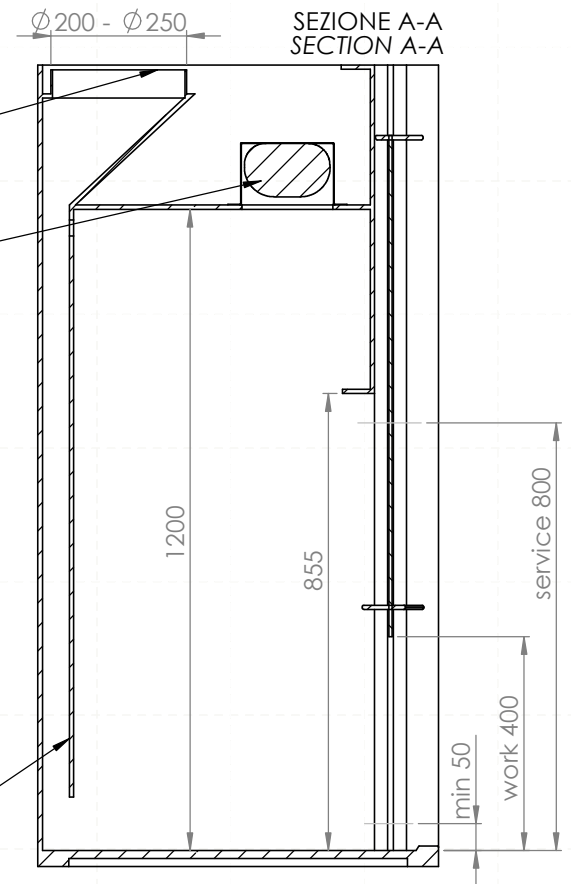


- collare di raccordo diam.250mm // exhaust manifold 250mm diameter
- Lampada fluorescente IP67 // IP67 fluorescent lamp
- Pannello frontale saliscendi contrappesato in PVC trasparente // Counterweighed frontal sash made in transparent PVC
- Struttura interna ed esterna totalmente realizzata in polipropilene // wholly polypropylene made frame
- Doppio fondale interno posteriore e superiore in polipropilene // Internal back-top baffle made in polypropylene



modello model	largh. est. ext. width (A) - mm	largh. aper. opening. width (B) - mm	largh. int. int. width (C) - mm	prof. est. ext. depth (D) - mm	prof. int. int. depth (E) - mm	portata nom. nom. flow-rate (m3/hr)
S1000-PP-750	1000	760	965	750	563	547
S1000-PP-800	1000	760	965	800	613	547
S1200-PP-750	1200	960	1165	750	563	691
S1200-PP-800	1200	960	1165	800	613	691
S1500-PP-750	1500	1260	1465	750	563	907
S1500-PP-800	1500	1260	1465	800	613	907
S1800-PP-750	1800	1560	1765	750	563	1123
S1800-PP-800	1800	1560	1765	800	613	1123

MASSIMA TEMPERATURA 60°C
MAXIMUM TEMPERATURE 60 °C

Gruppo Strola s.a.s.
Via. C. Pittara 52 - Torino
Tel. 011/7290860

Serie-S-PP
cappa chimica a espulsione totale in PP
S-Series
PP manufactured ducted fume cupboard

SCALA 1:10 DATA: 31/10/17